
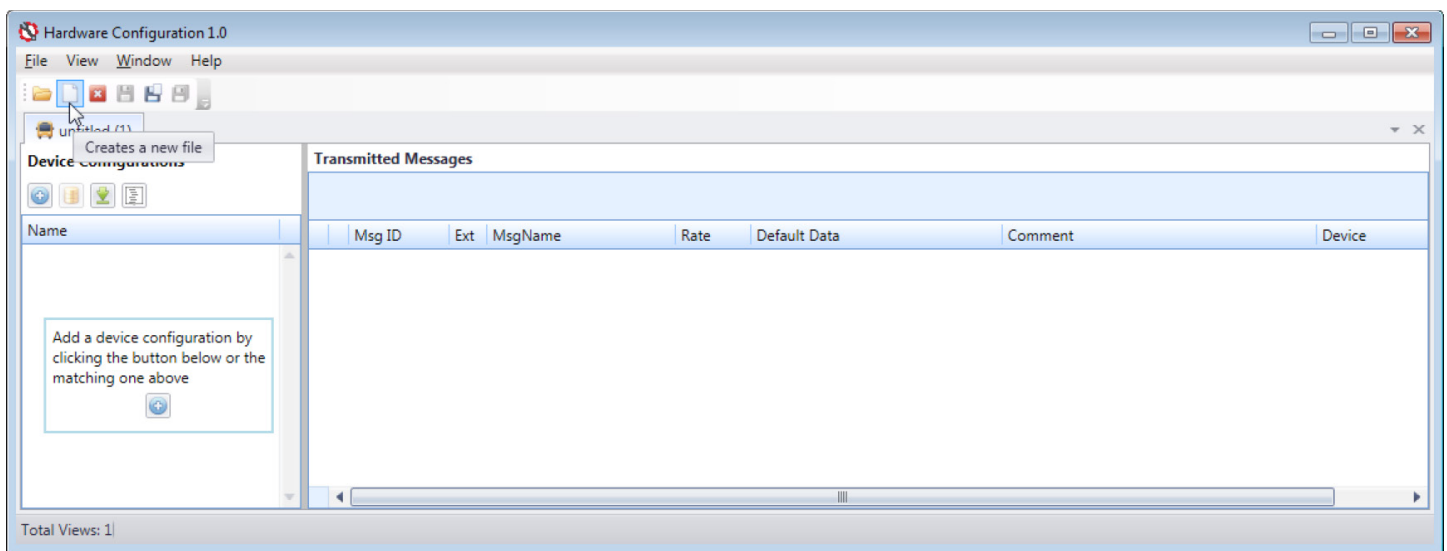



Configure EMX's using MBP

Creating a device configuration file (*.mbp) starts with either clicking the “New” () icon on the toolbar menu or selecting “File ->New” from the drop-down menu. There is no limit to the number of configuration files (*.mbp) that can be open.

The .mbp file layout consists of two sections: Device Configuration pane (left) and the Transmitted Messages pane (right). The Device Configuration pane lists all created configurations and contains a toolbar with four icon options. The Transmitted Message pane contains messages that are added and configured for the device configurations.



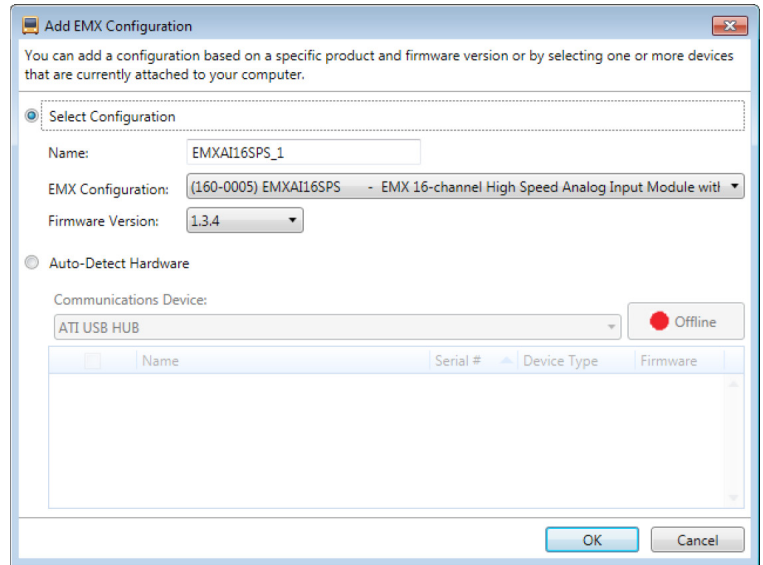
Add New Device Configuration

A new device can be added by specifying the type of device to add or if the actual hardware devices are attached to the computer, then a device configuration can be created based on the hardware type and its current name. To add the device, click the icon () located on the toolbar or within a text box located in the Device Configuration pane. The second option only exists until the first Device Configuration is added. This icon option opens the “Add EMX Configuration” dialog window. From this window, the user selects from one of two options: “Select Configuration” (preloaded devices) or “Auto-Detect Hardware.”

The default selection is “Select Configuration” when the “Add EMX Configuration” window appears. This option contains three fields to configure.



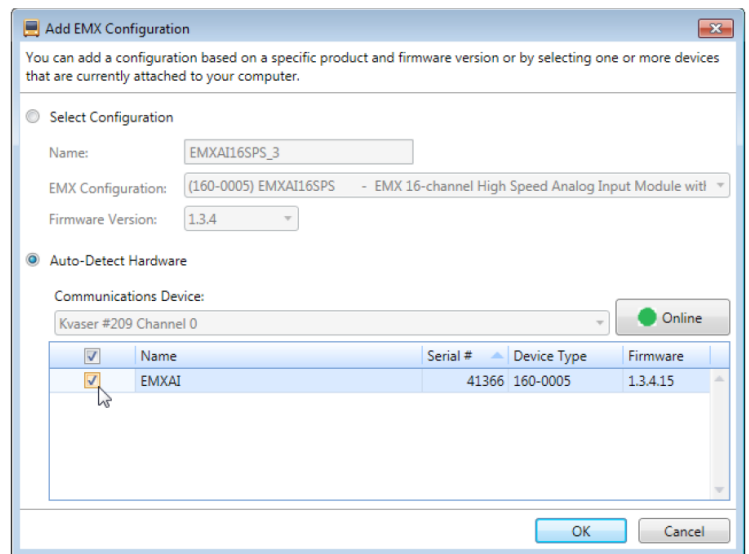
- **Name** - Name is automatically generated based on the EMX device selected in the “EMX Configuration” drop-down list. Name can be altered by the user.
- **EMX Configuration** - Drop-down list containing predefined EMX devices.
- **Firmware Version** - Select the EMX firmware version to use from the drop-down list. The displayed version is generated from the selected device in the EMX Configuration drop-down. To change the firmware version, click the drop-down list and select the desired version.



Note: The EMX firmware version and the selected version in the drop-down must match. Firmware V1.3.6 is required for EMX’s to communicate over MBP. Users will need VISION and CANary or a VISION hub to update EMX firmware.

The “Auto-Detect Hardware” feature enables quickly selecting any device listed provided the hardware devices are attached to the system and powered “On.” Devices connected to the system, but not powered “On” will not be detected and listed in the window.

- **Communication Device** - Select an available communication device from the drop-down list (e.g. ATI USB HUB or Kvaser device).
- **Offline/Online button*** - Click the button to toggle the communication hardware in “Online/Offline” mode.
- **Hardware Grid Area** - When in “Online” mode, the attached EMX devices will populate the list. Check the box next to the EMX device to add it to the MBP file.






**Note: To change the selected communication hardware in the “Communication Device” drop-down, the device must be in “Offline” mode.*



Saving the Device Configuration File

New configuration files are, by default, named “untitled (X)*” where the “X” signifies a number that increments as new config files are created within the current session. The asterisk (*) signifies the file requires saving. All new configuration files will have the asterisk after the default name until the file is saved. Saving a new file for the first time will open the “Save Document” window to enable saving the file with a new name and location. All future save actions will now save the file to its defined name and folder location.

There are three save options located in the “File” drop-down menu and the Toolbar.

-  (Save) - Saves the current file using its saved name.
-  (Save As) - Enables saving the current file to a different name and file location.
-  (Save All) - Saves all open files in the Hardware Configuration Utility.

Contact ATI Sales at : sales@accuratetechnologies.com

US +00 (1) 248 848 9200 / **China** +86 138 1023 6357 / **France** +33 (0) 1 72 76 26 10 / **Germany** +49 (0) 89 9700 7121
India +91 80 41 69 42 18 / **Japan** +81 3 53 25 62 22 / **Sweden** +46 (0) 31 773 7140 / **UK** +44 (0) 1767 652 340