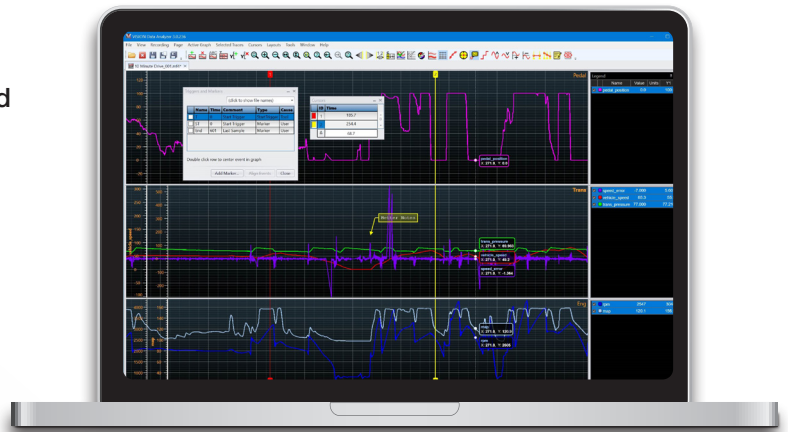


VISION Data Analyzer

for generic MDF file analysis

VISION Data Analyzer (VDA) 3.0 is a new software application from ATI for viewing and analyzing recorded data using the industry standard ASAM MDF4 file format. As a 64-bit Windows application it supports large file sizes generated by either ATI or 3rd party software.

- Supports ASAM MDF4 standard file format
- View and overlay multiple recordings
- Create and share layout templates to view multiple files the same way
- Intuitive navigation and extensive pan and zoom functionality
- Spend your time analyzing data rather than configuring software
- Export entire/partial data sets
- Meticulously recrafted as 64-bit for large files

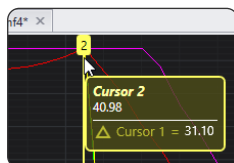
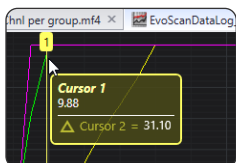


VISION Calibration and Data Acquisition Software is capable of exporting and recording directly into MDF4 format. Opening .REC files in VDA automatically converts them to MDF files and allows the viewing of recorded data that would normally have been too large for viewing within VISION. The methodology of VDA 3.0 provides users the ability to view and analyze data sets that would not be possible in a 32-bit application.

Layout tabs are designed to be detached (float mode) outside the applications framework or docked to various locations within the framework workspace. Configurations consists of resizing, adding, removing, renaming, configuring graph color themes, and adding/removing additional Y-axes.

VDA Display only loads the channels that are needed from the file to optimize performance. Data sets are becoming extremely large and are in the thousands of channels and most users only require a subset of those channels. By only loading the necessary channels, users can keep from wasting memory.

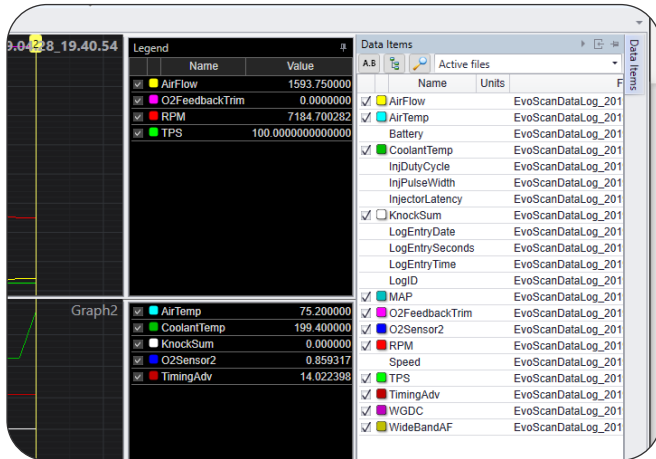
Configuration is made simple in VDA by allowing the user to save overlay configurations into a VISION Data Analyzer project file (VDAP). This preserves the overlay configuration so that the user can open a VDAP and still manipulate the overlay. This feature has been highly requested by customers in VISION and is now available in VDA. VDAP projects can be packaged into a zip file. This makes it much easier to share the overlaid set of files. Enhanced export options including the ability perform a partial export of a VDAP overlay set to a new VDAP that contains the desired subset of data.



VDA has popup tool tips such as interactive floating cursor window that displays the current cursor positions and the time delta between the cursors

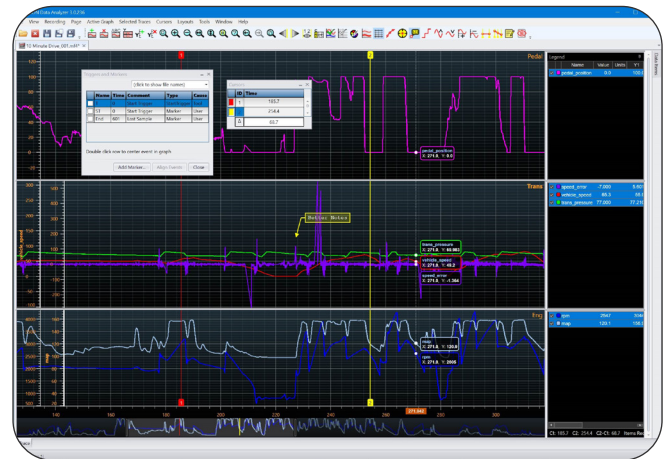
Display

VDA Display presents each recorder file as an independent layout tab containing pages with graphs and side windows.



Floating Triggers and Markers

Floating Triggers and Markers windows that can be kept on the screen to enhance navigation functionality.



Calculated Channels

VDA Calculated Channels allows different formula types including C# based calculations. When saving an MDF, VDA stores the calculations in the MDF attachment. Exporting an MDF stores calculations as channels in the file.

The screenshot shows the 'Scalar Properties[CalcChannel]' dialog box. It includes tabs for 'General', 'Formula', 'Format', 'YAxes', and 'Stats'. The 'Formula' tab is active, showing the 'Engineering units' and 'Formula type' dropdowns. The 'Equation' radio button is selected, and the formula text area contains the expression: $(PCM.Variables.pedal_position / 100) * 5$.

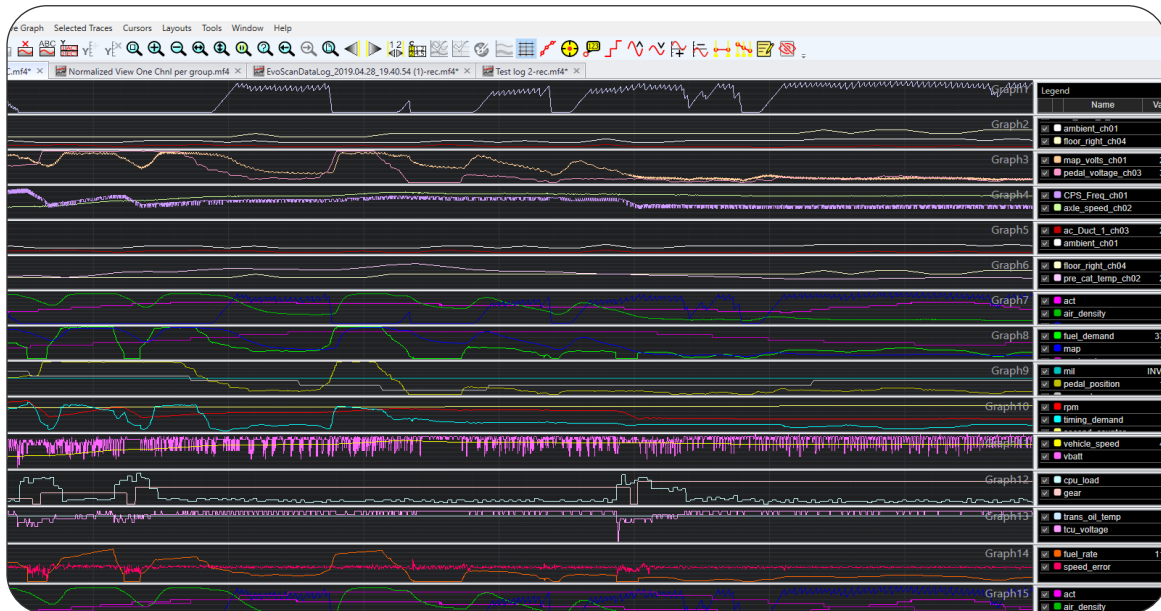
Import VISION Layouts

Stored VISION layouts (*.rlt) can be imported into VISION Data Analyzer *.layout files. The first 15 layouts are in the layout menu, layouts are stored in a common location. Layout information is added as an attachment when the file is saved.

The screenshot shows the 'Import VISION Layout Templates' dialog box. It includes a text area for the 'VISION Layout Templates Directory' and a list of 'Layout Templates'. The 'Destination Directory' is also specified. The 'Status' section at the bottom shows the progress of the import process.

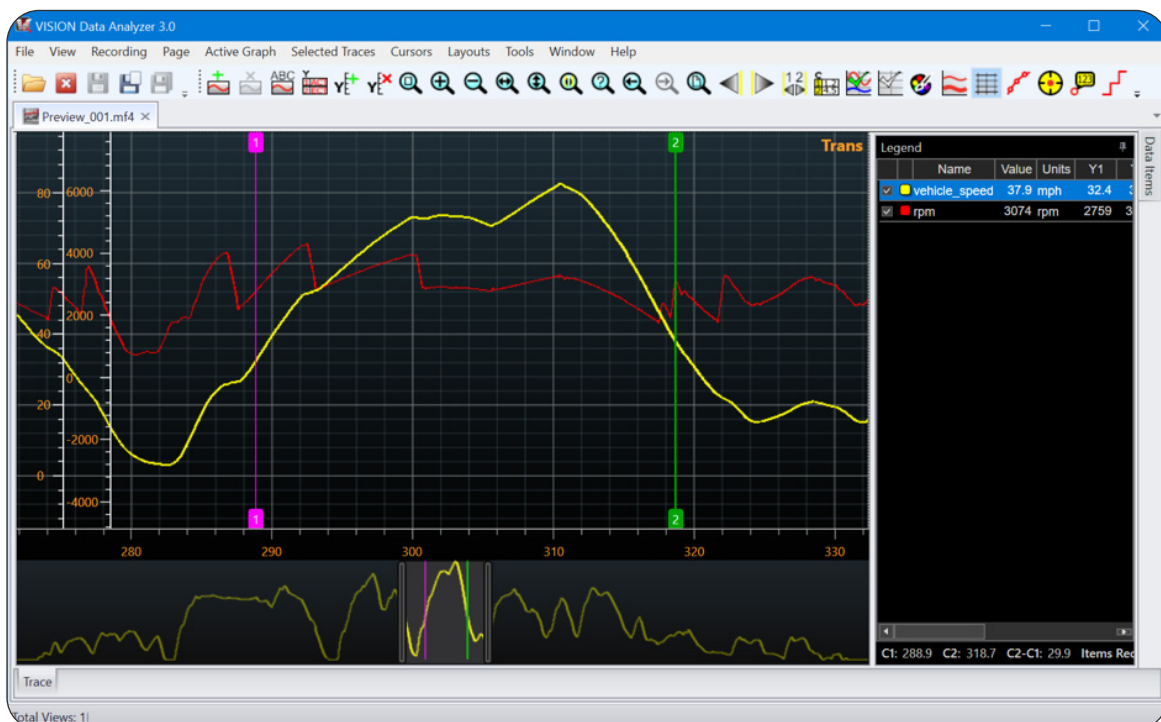
Multiple Independent Graphs

Page layouts can contain up to sixteen independently configured graphs.



Overview Scrollbar

The Overview Scrollbar will always appear beneath the lowest graph's X axis and it can be used to display an overview of all the data acquired for select data items in the MF4 file. The horizontal scroll bar doubles as a trace overview, up to 5 signals can be dragged to the overview bar. The Overview Scrollbar displays the full signals independent of the zoom levels.



VISION Data Analyzer UI Features:

- Interactive floating cursor window that displays the current cursor positions and the time delta between the cursors. The fields can be edited to provide precise control of cursor position.
- New cursor modes: Crosshair mode that provides X and Y crosshairs that track the cursor and highlight the axis values of the cursor position. Roll-Over mode that will show tool tips of the selected channels that contain the value of the signal at that position.
- The horizontal scroll bar has several new features:
 - The cursor positions are visible on the scroll bar making it easy to get to an off screen cursor.
 - Signals can be dragged to the scroll bar to provide an overview of the recording. This allows the user to know where they are in the data file when zoomed in. There are 3 size options for the height.
- Hovering over a marker will show a tool tip of the marker details.
- Notes have been enhanced with more formatting options.
- Access to the alpha channel on color settings
- Saving Formatting information in the file so that it reopens looking as it did when saved
- Layout files to reuse formatting
- Axis scaling and adjustment
- Adding pages and graphs
- Calculated Channel support
- Simple trace page navigation

Part Number	Name
VISION Data Analyzer Toolkits	
152-0011-STD	VISION Data Analysis and Viewer Toolkit
152-0011-STD-KIT	VISION Data Analysis and Viewer Toolkit

Email ATI Global Sales at :
sales@accuratetechnologies.com

US	+1 248 848 9200
China	+86 138 1023 6357
France	+33 (0) 1 72 76 26 10
Germany	+49 (0) 89 9700 7121
India	+91 80 41 69 42 18
Japan	+81 3 53 25 62 22
Sweden	+46 (0) 31 773 7140
UK	+44 (0) 1767 652 340

V1 A4 - VISION Data Analyzer Software



Information is provided on an "as is" basis and could include technical, typographical or other errors. Accurate Technologies Inc. makes no warranties, representations, or guarantees of any kind, express or implied, including but not limited to, accuracy, or completeness of the information, content, and products. V13/A4.