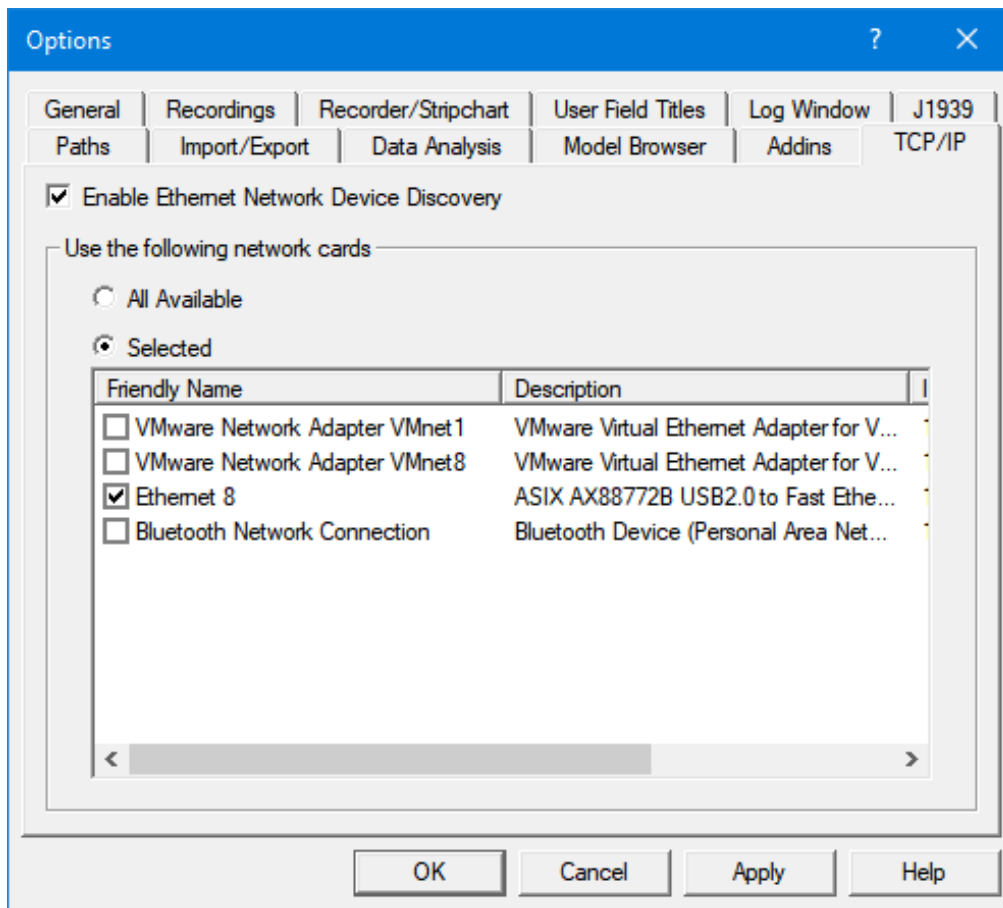


# ATI Ethernet Connectivity

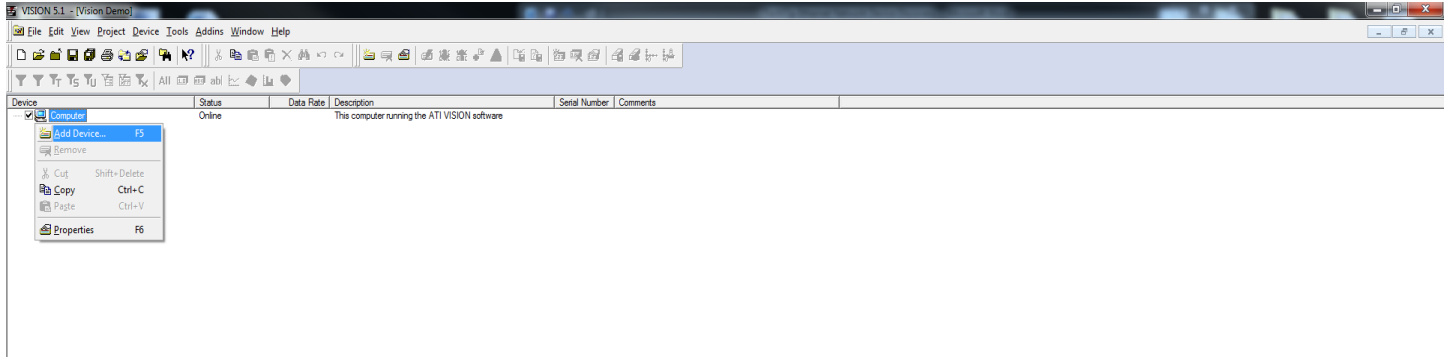
## Ethernet Network Device Discovery

The Ethernet Network Device discovery feature makes ATI's ethernet products as plug and play as an average network printer. In most cases users will find they do not require any changes to their network settings to begin using the A8 Ethernet or the EMX Ethernet.

Upon opening VISION calibration and Data Acquisition Software if the device isn't already in the project, simply go to the Options menu under Tools and locate the TCP/IP tab to select "Enable Ethernet Network Device Discovery". Once there, users can choose from searching all available networks or select a specific network to locate available devices.



When starting a new project, it may be necessary to add TCP/IP Port to the project if it has not been added. To add TCP/IP Port under the “Device” right click and select “Add Device...”.

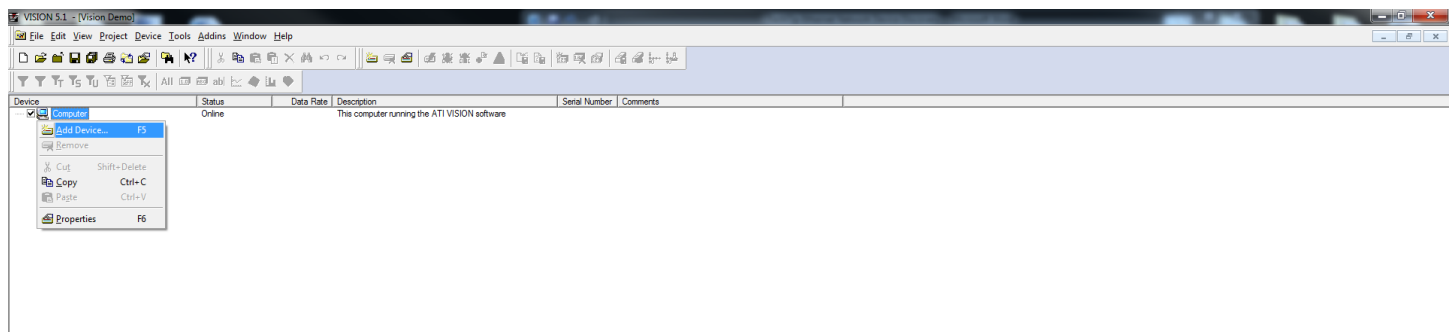


Now users will be able to see all available hardware on the networks selected to search under Discovered Network Devices tab at the bottom of the screen. Connection Status is displayed as shown below:

- Connected – Device is connected to the VISION license being used.
- Free – Device is not a part of any VISION project.
- In Use – Device is already in use by another VISION license.

Device Name	Serial Number	IP Address	Connection Status	Address Mode	MAC Address	Last Ping Time	Description
AB	106800132	169.254.132.32	Free	DHCP	00:0F:36:00:20:83	07/19/18 13:27:41	

In order to add a free device to a project, right click on the free device and select “Add to Device Tree”. The device will then be available in the VISION project that is currently open.



Contact ATI Sales at : [sales@accuratetechnologies.com](mailto:sales@accuratetechnologies.com)

**US** +00 (1) 248 848 9200 / **China** +86 138 1023 6357 / **France** +33 (0) 1 72 76 26 10 / **Germany** +49 (0) 89 9700 7121  
**India** +91 80 41 69 42 18 / **Japan** +81 3 53 25 62 22 / **Sweden** +46 (0) 31 773 7140 / **UK** +44 (0) 1767 652 340