

DLX 2

Compact Datalogger



The **DLX 2** is ATI's next-generation, high-performance datalogger built to meet the rigorous demands of automotive and industrial testing environments.

Versatile Connectivity

- Up to 5 CAN-FD channels (backward compatible with CAN 2.0B)
- RS485, LIN, ISO 9141 K-Line
- Wireless: Wi-Fi, Bluetooth v4.2, GNSS (GPS, GLONASS, Galileo, BeiDou)
- USB 2.0 High Speed (sealed Type-C)

Expandable & Compatible

- Dual M5 expansion connectors for single-cable connectivity to ATI modules
- Supports SD card logging (up to 2TB) in ASAM MDF4 format
- Native support for ATI's VISION Calibration and Data Acquisition Software

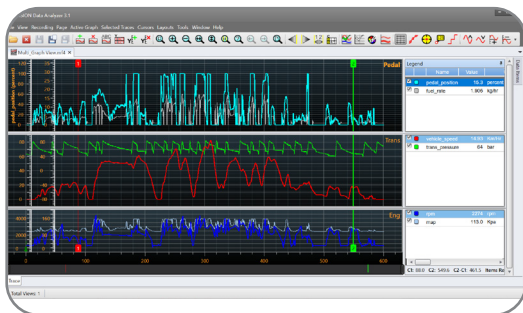
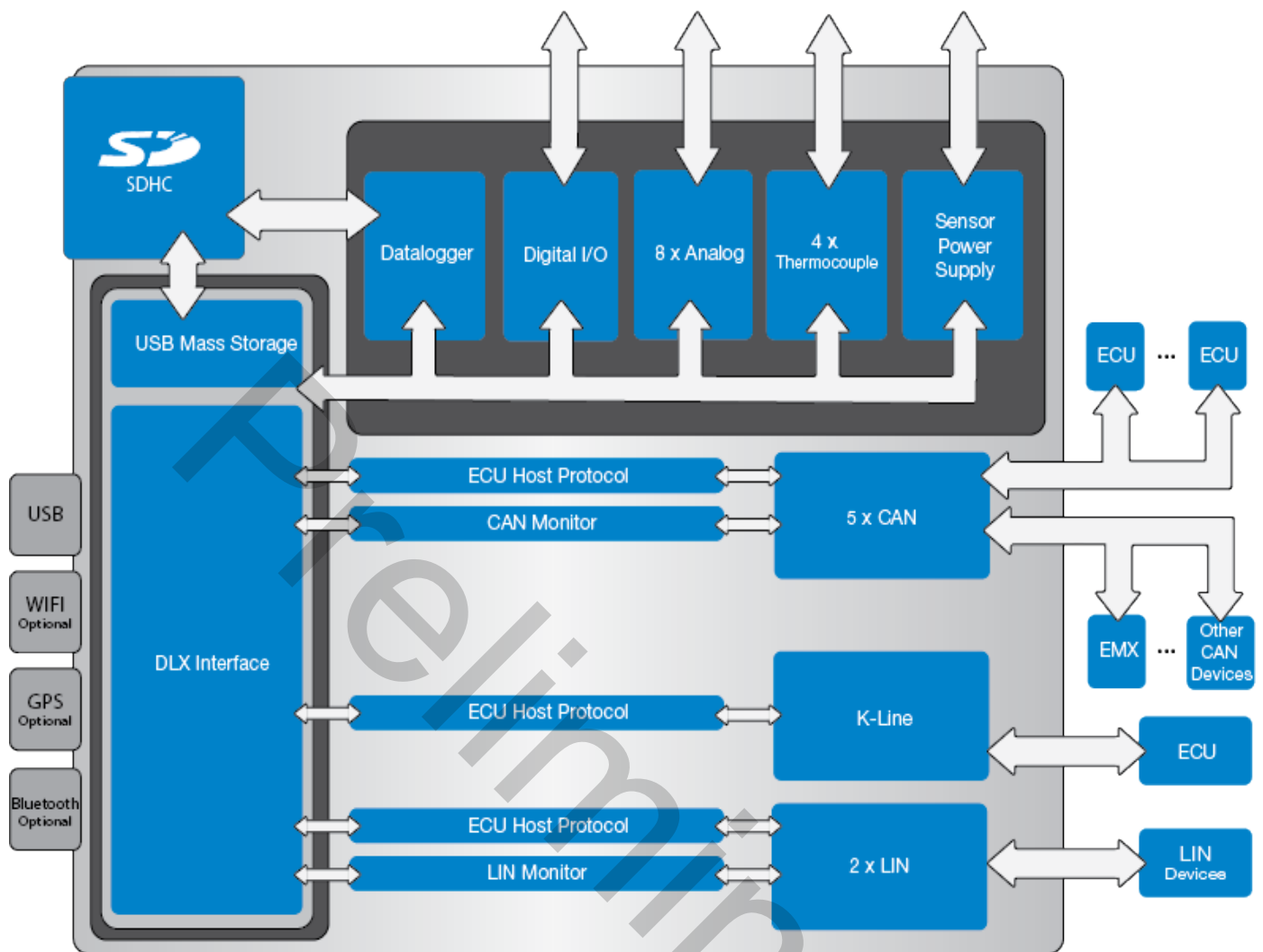
Compact & Accurate

- Housed in a compact, IP65-rated polyamide enclosure
- Offers 16-bit resolution
- Supports bipolar differential, unipolar single-ended, and K-type thermocouples
- Fixed sampling rates up to 2 kHz per channel
- Durable, pocket-sized, lab-to-field ready



Data is saved in MDF4 format to a removable SD card and can be accessed via USB-C or wirelessly






The VISION Data Analyzer was specifically developed to support MDF4 files that can accommodate extremely large data sets. View recordings and calibrations side by side at the same time in the Data Analyzer boosting productivity.

The DLX 2 Datalogger is easily configured using ATI VISION Calibration and Data Acquisition software.



DLX 2 Datalogger I/O Specifications

<p>DB26HD-M (I/O Connector)</p> 	<p>(4) -5V to +5V bipolar differential inputs</p> <p>ADC Resolution 16-bits Max Sample Rate 2KHz per channel, fixed Input Impedance 20MΩ Input Protection ±36V</p> <p>(4) 0V to 40V unipolar single-ended inputs</p> <p>ADC Resolution 16-bits Max Sample Rate 2 KHz per channel, fixed Input Impedance ~1MΩ Input Protection ~ ±100V</p> <p>(4) K-type Thermocouple measurement inputs</p> <p>Measurement Range -200°C to +1372°C / -328°F to 2501°F Max Sample Rate 10Hz per channel Input Protection ±36V</p> <p>(1) SPS Output</p> <p>Adjustment Step 10mV Accuracy ±20mV Adjustable voltage 5 - 15V (500mW max load)</p>
<p>DB15HD-M (Communication Connector)</p> 	<p>(1) DLX Power Input</p> <p>5 to 36VDC</p> <p>(1) ISO 9141 K-Line channel</p> <p>Supports XCPonSxl, ISO14230, custom protocols</p> <p>Hardware Options (depends on variant):</p> <p>Up to 5 CAN-FD</p> <p>CAN-FD, CAN 2.0B backwards compatible Supports CCP, XCP, OBD, CANMonitor, ATI DAQ HW RAW Bus Logging</p> <p>Up to 1 RS485</p> <p>Supports XCPonSxl, ISO14230, custom protocols</p> <p>Up to 4 Digital I/O</p> <p>0-36V Input, Logic Output, Open Drain Mode (500mA max), Disabled (Hi-Z)</p> <p>Up to 2 LIN channels</p> <p>RAW Bus Logging</p>
<p>USB (PC/Host Connector)</p> 	<p>Sealed Type-C</p> <p>USB 2.0 High Speed</p> <p>Host Protocol Support</p> <p>Native VISION Calibration and Data Acquisition Software USB Mass Storage Device Windows DLL driver Published spec for device and logger configuration file</p>

DLX 2 Datalogger I/O Specifications Cont.

Wireless (PC/Host Configuration)	Optional WiFi Module
	802.11b/g/n 2.4 GHz, Integrated internal antenna Upload Logs to FTP Server, OneDrive or VISION Enterprise
	Optional Bluetooth Module
	Bluetooth v4.2 2.4 GHz, Integrated internal antenna
	Optional GNSS (GPS) Module
	Support for GPS, Galileo, GLONASS, BeiDou External SMA antenna connector for best satellite reception
Expansion (2x M5 Connectors)	(1) High Speed ATI Expansion connector
	Power & Communications for single cable connection to expansion modules & ATI devices
	(1) Low Speed ATI Expansion connector
	Power & Communications for single cable connection to expansion modules & ATI devices
SD Card	SD Specification
	SD card, 2TB max size TBD: 16GB class 10 industrial grade card included
	File System
	FAT, FAT32, exFAT Long folder/file names supported with Macros Logs to ASAM MDF4 file format

DLX 2 Datalogger General Specifications

Configuration	
Application Interface	VISION Calibration and Data Acquisition Software
Operating Conditions	
Connectors	To PC: USB Mini-B I/O Signal (INST): DB26HD-M Power and Data (COM): DB15HD-M
Power Supply	5 to 36VDC
Temperature Range	-40°C to +85°C / -40°F to +185°F
Mechanical	
Construction	IP65 rating Black high performance polyamide enclosure User-removable SD card memory card with sealed cover
Dimensions	151.5mm x 65mm x 31mm 6 x 2.5 x 1.2in
Weight	~218g

DLX 2 Datalogger Order Information

Product	
Part Numbers	Description
153-2001	DLX2.A1 w/ CANFDx5, WiFi and GPS

Company specific variants are available. Please contact your local ATI Sales Representative for details.

Accessories		
Part Numbers	Description	
TBD-6FT	1.83m/6ft	Cable; DLX PWR/Comm Breakout; DB15 to Unterminated
150-0211-6FT	1.83m/6ft	Cable; DLX I/O Breakout; DB26 to Unterminated



sales@accuratetechnologies.com
www.accuratetechnologies.com



Information is provided on an "as is" basis and could include technical, typographical or other errors. Accurate Technologies Inc. makes no warranties, representations, or guarantees of any kind, express or implied, including but not limited to, accuracy, or completeness of the information, content, and products.